



---

## **Hospice Enrollment Transaction**

### **NOE Submission Guide**

Instructions for MFT submissions of the 837 Health Care Claim: Institutional Transaction  
as a Hospice Notice of Election.

Version 01

7/27/22



# NOE SUBMISSION GUIDE

## Table of Contents

1	BACKGROUND .....	1
1.1	WHAT HOSPICE ENROLLMENT DATA SHARING SOLVES .....	1
1.2	HOW HOSPICE ENROLLMENT DATA SHARING WORKS .....	2
1.3	DOCUMENT PURPOSE .....	2
1.4	NOE TRANSACTION TYPES .....	3
2	IMPLEMENTATION .....	3
2.1	SUMMARY.....	3
2.2	GETTING STARTED .....	4
2.3	SETUP PROCESS .....	4
2.4	MFT DIRECTORIES .....	5
2.5	FOLDER DIRECTORIES .....	5
2.6	NOE RESPONSE METHODS.....	9
3	837I NOE INTERCHANGE DATA GUIDELINES.....	10
3.1	INTRODUCTION .....	10
3.2	INDUSTRY GUIDANCE RESOURCES .....	10
3.3	837I NOE SUBMISSION FILE NAME .....	10
3.4	INTERCHANGE CONTROL SEGMENT VALUES .....	11
3.5	EXPECTED NOE DATA .....	12
4	SUBMISSION PROCESSING .....	18
4.1	SUMMARY.....	18
4.2	NOE SUBMISSION AND RESPONSE PROCESSING .....	19
5	TROUBLE SHOOTING AND SUPPORT .....	22
5.1	GENERAL INQUIRIES AND TROUBLESHOOTING.....	22
5.2	RELAYHEALTH EXTERNAL MANAGED FILE TRANSFER (MFT) SYSTEM .....	22
6	APPENDIX.....	A
6.1	GLOSSARY .....	A

# 1 Background

The Health and Human Services Office of Inspector General (“OIG”) published a report <https://oig.hhs.gov/oas/reports/region6/61708004.pdf> indicating that Medicare Part D paid for prescription drugs in 2016 that should have been paid for under the Medicare Part A hospice benefit. In the report, OIG stated that Medicare Part D paid \$422.7 million for prescription drugs for beneficiaries enrolled in hospice in 2016 that should have been paid for under Medicare Part A.

Medicare Part A pays a per diem payment for each beneficiary enrolled in hospice, “regardless of the number of services provided.” Prescription drugs to treat the beneficiary’s pain, as well as symptoms related to the terminal illness and related conditions should be covered under the hospice per diem. If those same drugs are being paid for under Medicare Part D, these are considered duplicate payments.

As a result of the audit, OIG believes that in 2016 Medicare Part D paid for \$422.7 million in prescriptions that it believes \$160.8 million should have been paid for by Medicare Part A and \$261.9 million should have been paid by hospice organizations or hospice beneficiaries.

- Hospices provided reasons for these payments such as:
- They did not know that the medication was prescribed by a provider not associated with the hospice and filled by a pharmacy other than the hospice pharmacy
- The drug was miscoded as non-covered
- The drug was dispensed close to the hospice admission, so the hospice election was not yet processed
- The drug was billed Part D in error by the pharmacy
- The hospice believed there was a non-Medicare third party paying

OIG recommended that oversight be performed by Centers for Medicare and Medicaid Services (“CMS”), to ensure drugs covered under the hospice per diem not be paid by Medicare Part D.

To minimize the Part D payments, Part D plans need timely notification when a beneficiary enrolls in hospice to enact appropriate edits that deny payment of drugs under Part D, where appropriate.

## 1.1 What Hospice Enrollment Data Sharing Solves

In 2018 1.55 million Medicare beneficiaries were enrolled in hospice care for one or more days. The average length of service for Medicare beneficiaries was 89.6 days, with the median length being 18 days.

Research indicates that due to Medicare Administrative Contractor (MAC) payment processes and system processing constraints, the receipt of data from the Common Working File can be as long as 65 days.

Lag times in Hospice Enrollment data coordination from CMS can result in a Part D plan inadvertently covering a drug that should be covered under the hospice benefit or by the beneficiary. CMS guidance encourages hospice providers to report a beneficiary's Hospice Enrollment directly to the beneficiary's Part D sponsor prior to sending claims for drugs administered during hospice.

Hospice providers have up to 5 days to submit enrollment notifications (notice of election) to CMS and the process proposed in the hospice enrollment data sharing project seeks to reduce Part D notification time to a maximum of 48 hours after the notification is sent.

## 1.2 How Hospice Enrollment Data Sharing Works

The hospice submits the Notice of Election to the MAC by EDI using the 837 Health Care Claim: Institutional (837I) transaction based on the ASC X12 Technical Report Type 3 (TR3), version 005010X223a2 837I. These notices may be any of the following: election, transfer, termination/revocation, changes, or cancellation.

Hospices, through their software or clearinghouses, are encouraged to send a copy of the 837I NOE to RelayHealth (**RHPS**) using the RelayHealth External Managed File Transfer (MFT) System. The RHPS MFT service validates the 837I X12 implementation standard and transfers accepted transaction data to the Medicare Part D Transaction Facilitator (PDTransFac) for processing.

The PDTransFac service validates that the required NOE data is present. When the required data is available PDTransfac creates a real-time NCPDP Nx transaction to notify the Part D plan about the beneficiary hospice election, changes, or cancellation.

PDTransFac generates and delivers the Hospice Provider Election Transaction Status Report to the participating Hospices. This report includes that includes the transactions that passed 999 and TA1 edits and have either been accepted by PDTransfac or rejected for missing or invalid NOE data.

During Phase I of the pilot, only 837I transaction information will be sent to the Part D Plan. Data entered by hospice providers into Direct Data Entry (DDE) will not be sent.

## 1.3 Document Purpose

This guide provides 837I NOE submitters an overview of Hospice Enrollment EDI processing of 837I submissions and responses.

## 1.4 NOE Transaction Types

The RHPS Medicare Part D Transaction Facilitator (PDTransFac) accepts the same NOE transaction types sent to a MAC. Once the transaction data is validated, PDTransFac generates the appropriate message type to expedite the hospice enrollment data sent to the Part D sponsors.

- Notice of Election (NOE)
- Enrollment
- Benefit Period Extensions
- NOE Correction
- NOE Cancellation
- Notice of Change (NOC) for Patient Facility Transfer
- NOC Cancellation
- Notice of Termination/Revocation (NOTR)
- NOTR Correction
- NOTR Cancellation

## 2 Implementation

### 2.1 Summary

NOE submitters will coordinate setup, and implementation with a RelayHealth Account Manager. Start by submitting an email to [HospiceSupport@Relayhealth.com](mailto:HospiceSupport@Relayhealth.com) with the subject: New Hospice Transmission setup.

Setup includes:

- Setup account and access credentials for the RelayHealth External Managed File Transfer (MFT) system
- Coordination of RHPs MFT PGP Encryption Key assignments
- Submitter setup of MFT system address and file folder directories for test and production submissions and responses
- Coordination of NOE submitters PGP Public encryption key for access to response files

Once MFT is setup, 837I NOE test files can be sent to RelayHealth to confirm connectivity, validate 837I data and that routing for responses is configured.

## 2.2 Getting Started

Requestors should complete the **CMS Hospice Enrollment Notification to Part D Plans Transmission MFT Setup**, which can be found under Related Documents on the Clearinghouses/Claim Submitters section of the Hospice page on the MediFacD website at: <https://medifacd.mckesson.com/Hospice/Clearinghouses-Claim-Submitters/>

The Hospice Enrollment Notification form provides RelayHealth with required information:

- Hospice identification and contact information
- Submitter Name
- Desired username to access the RelayHealth MFT system
- Email address for notifications of file processing and MFT system password reset
- Submission Response Delivery Method – Push or Pull
  - Pull responses are recommended to better coordinate RHPS responses
  - Push responses can be configured by request, however as noted during the pilot most submitters do not want the response files to be pushed since they are already receiving a response file from the MAC.
  - Push system access details must be provided to RelayHealth

The Hospice Enrollment Notification form provides submitters with initial MFT configuration information. Complete the form and return it as indicated on the form to initiate credential setup.

## 2.3 Setup Process

Setup includes the following steps. Configuration and coordination for validation could occur in a different order than listed here.

- 1 Complete the Transmission MFT Setup form and return to RelayHealth as indicated on the form
- 2 Provide the 837I NOE submitters PGP public encryption key for access to submission response files
- 3 RelayHealth will configure the submitter account and folder directories on the RelayHealth External Managed File Transfer System
- 4 RelayHealth will provide the following
  - Notification of MFT account setup
  - Access credentials
  - The required RHPS PGP Encryption Key for 837I NOE submissions
- 5 Submitter configures their MFT
- 6 Validate submission configurations

- 7 RelayHealth and the submitter will coordinate submission testing that includes:
  - 7.1 Send 837I NOE test transactions
  - 7.2 Receive test file acknowledgments
- 8 Begin sending production 837I NOE

## 2.4 MFT Directories

### 2.4.1 Credentials

RelayHealth provides submitters with the credentials to access the RelayHealth External Managed File Transfer System.

- External Managed File Transfer (MFT) System user ID and password
- PGP encryption key

### 2.4.2 MFT Address

Setup connections to submit NOE Interchanges and receive validation responses as follows.

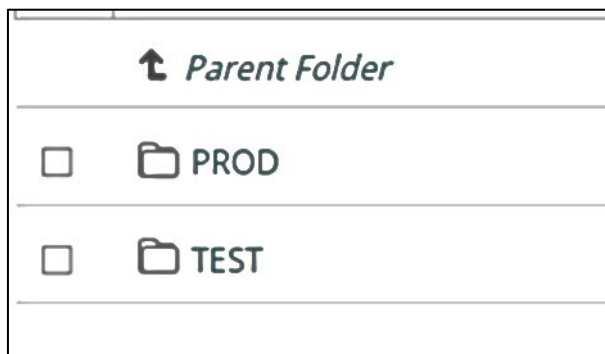
Hostname: <https://emft.relayhealth.com/>

Port: 22

## 2.5 Folder Directories

Once submitters access the External Managed File Transfer (MFT) System, there are two parent folders. Each parent folder contains the file folders to submit 837I NOE Interchanges and to receive the 837I NOE responses.

**Figure 1** Image of the RelayHealth MFT landing page graphical user interface





**TEST**

Facilitates processing 837I NOE test submissions and responses only. No data is transferred to the Medicare Part D Transaction Facilitator (PDTransFac).

**PROD**

837I NOE production submissions and responses.

Production 837I NOE submissions are processed for eligible data that is sent to the PDTransFac system to generate messages for the Part D plan.

**2.5.1 TEST Folders**

The test folders facilitate 837I NOE test Interchange submissions. Test Interchanges must be directed to the TEST NOE submission folder directory.

NOE submitters can access responses for 837I NOE test submissions from the test submission response folders.

Test file parent folder name: TEST

*Figure 2 Image of the graphical user interface showing the subfolders contained within the Test directory of the RelayHealth MFT site*

<input type="checkbox"/> v	Name	File ID
	↑ Parent Folder	
<input type="checkbox"/>	📁 Error_Files	863606130
<input type="checkbox"/>	📁 NOETest	855466610
<input type="checkbox"/>	📁 TestRHPResponse	855549316

**2.5.1.1 Test NOE Submission Folder**

Required for submitters to send 837I NOE test file submissions.

Folder Name: NOETest

Folder Directory: TEST/NOETest

Folder Address: <https://emft.relayhealth.com/TEST/NOETest>

**2.5.1.2 Test Submission Response Folders**

There are 2 forms of responses from RHPS about the MFT submission. Each response type has a unique folder.

- A text-based error report for invalid file name, type, or content

Note: Text based error messages can also be sent by email.

The email address for receipt of notifications must be submitted during MFT Setup.

- An email is generated with the Subject: Error Report (File Name)
  - Email Body Text: This email contains an attached report of errors for the file noted in the subject
  - The text-based error report is attached
- X12 TA1 and 999 Acknowledgment responses from RHPS

Note: Notifications for responses can be sent by email. The email address for receipt of notifications must be submitted during MFT Setup.

NOE submitters retrieve responses for NOE submission processing from the response folders.

Note: The submitters PGP Public encryption key for response files is required.

Response folders are accessible by the submitter configured for the MFT account. Clearinghouse submitters that are intermediaries for hospice provider EDI processing should setup their systems to provide response files back to the hospice provider.

#### **2.5.1.2.1 Folder for Text Error Reports about Invalid Test Submission File Type**

Required for submitters to retrieve text-based error report responses.

Folder Name: Error\_Files

Folder Directory: TEST/Error\_Files

Address: [https://emft.relayhealth.com/TEST/Error\\_Files](https://emft.relayhealth.com/TEST/Error_Files)

#### **2.5.1.2.2 Folder for Test X12 Acknowledgment Responses From RHPS**

Required for submitters to retrieve X12 acknowledgments for 837I NOE test file submissions.

Folder Name: TESTRHPResponse

Folder Directory: TEST/TESTRHPResponse

Folder Address: <https://emft.relayhealth.com/TEST/TESTRHPResponse>

### **2.5.2 Production Submission Folders**

The production folders facilitate 837I NOE submissions for processing to PDTransFac. Interchange indicated as production must be directed to the PROD NOE submission folder directory.

NOE submitters retrieve responses for 837I NOE submissions from the PROD response folders.

Production parent folder name: PROD

**Figure 3 Image of the graphical user interface showing the subfolders contained within the Production directory of the RelayHealth MFT site**

<input type="checkbox"/> Name	File ID	<input checked="" type="checkbox"/>	Size/Cor
↑ Parent Folder			
<input type="checkbox"/> Error_Files	863742095		
<input type="checkbox"/> NOEProd	862528033		
<input type="checkbox"/> ProdRHPResponse	862638603		

**2.5.2.1 NOE Submission Folder**

Required for submitters to send 837I NOE file submissions for processing to the PDTransFac system.

Folder Name: NOEPROD

Folder Directory: PROD/NOEPROD

Folder Address: <https://emft.relayhealth.com/prod/NOEprod>

**2.5.2.2 Prod Submission Response Folders**

There are 2 forms of responses from RHPS about the MFT submission. Each response type has a unique folder.

- A text-based error report for invalid file name, type, or content
  - Note: Text based error messages can also be sent by email. The email address for receipt of notifications must be submitted during MFT Setup.
  - An email is generated with the Subject: Error Report (File Name)
  - Email Body Text: This email contains an attached report of errors for the file noted in the subject
  - The text-based error report is attached

- X12 TA1 and 999 Acknowledgment responses from RHPS

Note: Notifications for responses can be sent by email. The email address for receipt of notifications must be submitted during MFT Setup.

NOE submitters retrieve responses for NOE submission processing from these response folders.

Note: The submitters PGP Public encryption key for response files is required.

Response folders are accessible by the submitter configured for the MFT account. Clearinghouse submitters that are intermediaries for hospice provider EDI processing should setup their systems to provide response files back to the hospice provider.

#### 2.5.2.2.1 Text based error reports for invalid file type

Required for submitters to retrieve text-based error report responses.

Folder Name: Error\_Files

Folder Directory: PROD/Error\_Files

Folder Address: [https://emft.relayhealth.com/PROD/Error\\_Files](https://emft.relayhealth.com/PROD/Error_Files)

#### 2.5.2.2.2 X12 Acknowledgment responses from RHPS:

Required for submitters to retrieve X12 acknowledgments for 837I NOE file submissions.

Folder Name: PRODRHPResponse

Folder Directory: PROD/PRODRHPResponse

Folder Address: <https://emft.relayhealth.com/PROD/PRODRHPResponse>

## 2.6 NOE Response Methods

837I NOE submitters can “Pull” responses for 837I submissions from the appropriate response folder on RelayHealth External Managed File Transfer (MFT) System.

Push response delivery is available by request.

**Note: The pull method can help avoid risks of processing responses for the same transaction sent to both the MAC and RHPS.**

### 2.6.1 Pull

The NOE submitter will access the RHPS MFT site to retrieve response files. Access to retrieve response files is coordinated during implementation.

Response files are saved for 30 days.

#### 2.6.1.1 Push

Push available by request and coordinated during MFT setup.

## 3 837I NOE Interchange Data Guidelines

### 3.1 Introduction

NOE submitters should send the same transaction data that was submitted to the MAC.

The interchange data guidelines should be used in conjunction with the **CMS Instructions related to the Non-Standard Use of the 837 Health Care Claim: Institutional Transaction as a Hospice Notice of Election** and the associated ASC X12 TR3 Implementation Guide. These guidelines are intended to facilitate the submission of 837I NOE interchanges to the RelayHealth (RHPS) External Managed File Transfer (MFT) System for transaction validation and data transfer to The Medicare Part D Transaction Facilitator (PDTransFac).

The information in this chapter does not replace industry guidelines and standards.

### 3.2 Industry Guidance Resources

#### 3.2.1 X12 Format and Syntax Rules

- ASC X12 Standards for Electronic Data Interchange Technical Report Type 3. Version ASC X12N 005010X223A2 - Health Care Claim: Institutional (837I)
- ASC X12 Standards for Electronic Data Interchange Technical Report Type 3. Version ASC X12C/005010X231 Implementation Acknowledgment for Health Care Insurance (999)

#### 3.2.2 837I Requirements published by CMS

- Medicare Claims Processing Manual Chapter 11 - Processing Hospice Claims
- CMS Companion Guide Transaction Information. Instructions related to the Non-Standard Use of the 837 Health Care Claim: Institutional Transaction as a Hospice Notice of Election based on ASC X12 Technical Report Type 3 (TR3), version 005010A2.

### 3.3 837I NOE Submission File Name

Format the 837I NOE Interchange file names as:

RHP\_<submitter entity name>\_CCYYMMDD\_01.dat.pgp

Entity Name is the submitter name submitted during MFT Setup.

Submission date is formatted as CCYY = 4-digit year, MM = 2-digit Month, DD = 2-digit day.

The number ending the file name is the count of the file submission for the submission date that starts with 01 each day and increments sequentially for each additional file submitted the same day. (1<sup>st</sup> file = 01, 2<sup>nd</sup> = 02 and so on)

**Note: All submission files from the submitter must be PGP encrypted. The file name must end with the file type suffix .pgp**

### 3.4 Interchange Control Segment Values

RelayHealth (RHPS) validates the syntax requirements of the ISA / IEA control segments. Data not valid based on the Implementation Guide will cause files to be rejected.

The values listed here define data segments where the value could impact the processing of the interchange. For segments not listed you may submit the same value you sent to the MAC.

<b>Data Element</b>	<b>Element Name</b>	<b>Expected Entry</b>	<b>Note</b>
ISA01	Authorization Information Qualifier	Any TR3 Compliant Value Recommend 00	Could be required by a MAC. Not Validated by RHPS.
ISA02	Authorization Information	Any TR3 Compliant Value Recommend Blank	Could be required by a MAC. Not Validated by RHPS.
ISA03	Security Information Qualifier	Any TR3 Compliant Value Recommend 00	Could be required by a MAC. Not Validated by RHPS.
ISA04	Security Information	Any TR3 Compliant Value Recommend Blank	Could be required by a MAC. Not Validated by RHPS.
ISA08	Interchange Receiver ID	PDTransFac	Validated by RHPS as intended receiver or TA1 Reject
ISA12	Interchange Control Version Number	00501	Industry standard for ASC X12N/005010X223A2 or TA1 Reject
ISA14	Acknowledgment Requested	0 = No TA1 of accepted files 1 = Interchange Acknowledgment Requested	0: Only instances of a TA1 rejection are returned 1: TA1 response is delivered for each verified transaction submission

<b>Data Element</b>	<b>Element Name</b>	<b>Expected Entry</b>	<b>Note</b>
ISA15	Interchange Usage Indicator	T = Test P = Production	T: Must be submitted in the MFT Test Folder or TA1 Reject  P: Must be submitted in the MFT Production folder or TA1 Reject

### 3.5 Expected NOE Data

The following table defines the data expected by RHPS to determine the NOE transaction and generate the appropriate messages to the Part D plan sponsor. It is for informational purposes only and is not an instruction.

#### 3.5.1 NOE Notice of Election

<b>Loop 2300 Segment Data Element.</b>	<b>Element Name</b>	<b>Expected Value</b>	<b>Note</b>
CLM05-3	Claim Frequency Type Code	8XA	X= 1 or 2
DTP01	Date Time Qualifier	435	
DTP02	Date Time Period Format Qualifier	DT	
DTP03	Statement From or To Date	CCYYMMDDHHMM	

#### 3.5.2 NOTR - Notice of Termination/Revocation of Hospice

<b>Loop 2300 Segment Data Element.</b>	<b>Element Name</b>	<b>Expected Value</b>	<b>Note</b>
CLM05-3	Claim Frequency Type Code	Claim Frequency=8XB	X= 1 or 2
DTP01	Date Time Qualifier	434	
DTP02	Date Time Period Format Qualifier	RD8	

<b>Loop 2300 Segment Data Element.</b>	<b>Element Name</b>	<b>Expected Value</b>	<b>Note</b>
DTP03	Statement From or To Date	CCYYMMDD- CCYYMMDD	To date is the termination date

### 3.5.3 NOC - Notice of Change of Provider/Transfer

<b>Loop 2300 Segment Data Element.</b>	<b>Element Name</b>	<b>Expected Value</b>	<b>Note</b>
CLM05-3	Claim Frequency Type Code	Claim Frequency=8XC	X= 1 or 2
DTP01	Date Time Qualifier	435	
DTP02	Date Time Period Format Qualifier	DT	
DTP03	Statement From or To Date	CCYYMMDDHHMM	

### 3.5.4 Correction of NOE

<b>Loop 2300 Segment Data Element.</b>	<b>Element Name</b>	<b>Expected Value</b>	<b>Note</b>
CLM05-3	Claim Frequency Type Code	Claim Frequency=8XA	X= 1 or 2
DTP01	Date Time Qualifier	435	
DTP02	Date Time Period Format Qualifier	DT	
DTP03	Statement From or To Date	CCYYMMDDHHMM	Newly corrected admission date
HI01-1	Code List Qualifier Code	BH	



<b>Loop 2300 Segment Data Element.</b>	<b>Element Name</b>	<b>Expected Value</b>	<b>Note</b>
HI01-2	Occurrence Code	56	Submit the original election Date using occurrence code 56
HI01-3	Date qualifier	D8	
HI01-4	Date Time Period	CCYYMMDD	Original admission date (date to be corrected)
HI02-1	Condition code qualifier	BG	HI02-1 BG and HI02-2 D0 with Occurrence code 56 indicates correction
HI02-2	Condition code	D0	HI02-1 BG and HI02-2 D0 with Occurrence code 56 indicates correction

### 3.5.5 Correction of NOTR

<b>Loop 2300 Segment Data Element.</b>	<b>Element Name</b>	<b>Expected Value</b>	<b>Note</b>
CLM05-3	Claim Frequency Type Code	Claim Frequency=8XB	X= 1 or 2
DTP01	Date Time Qualifier	435	
DTP02	Date Time Period Format Qualifier	DT	

<b>Loop 2300 Segment Data Element.</b>	<b>Element Name</b>	<b>Expected Value</b>	<b>Note</b>
DTP03	Statement From or To Date	CCYYMMDDHHMM	Newly corrected termination/revocation date
HI01-1	Code List Qualifier Code	BH	
HI01-2	Occurrence Code	56	Submit the original NOTR Date using occurrence code 56
HI01-3	Date qualifier	D8	
HI01-4	Date Time Period	CCYYMMDD	Incorrect termination/revocation date
HI02-1	Condition code qualifier	BG	HI02-1 BG and HI02-2 D0 with Occurrence code 56 indicates correction
HI02-2	Condition code	D0	HI02-1 BG and HI02-2 D0 with Occurrence code 56 indicates correction

### 3.5.6 Correction of NOC

<b>Loop 2300 Segment Data Element.</b>	<b>Element Name</b>	<b>Expected Value</b>	<b>Note</b>
CLM05-3	Claim Frequency Type Code	Claim Frequency=8XC	X= 1 or 2
DTP01	Date Time Qualifier	435	
DTP02	Date Time Period Format Qualifier	DT	
DTP03	Statement From or To Date	CCYYMMDDHHMM	Newly corrected termination/revocation date

Loop 2300 Segment Data Element.	Element Name	Expected Value	Note
HI01-1	Code List Qualifier Code	BH	
HI01-2	Occurrence Code	56	Submit the original NOC Date using occurrence code 56
HI01-3	Date Qualifier	D8	
HI01-4	Date Time Period	CCYYMMDD	Incorrect transfer date
HI02-1	Condition Code Qualifier	BG	HI02-1 BG and HI02-2 D0 with Occurrence code 56 indicates correction
HI02-2	Condition Code	D0	HI02-1 BG and HI02-2 D0 with Occurrence code 56 indicates correction

### 3.5.7 Cancellation of NOE or NOC

Loop 2300 Segment Data Element.	Element Name	Expected Value	Note
CLM05-3	Claim Frequency Type Code	Claim Frequency=8XD*	X= 1 or 2 Unable to determine NOE or NOC
DTP01	Date Time Qualifier	435	

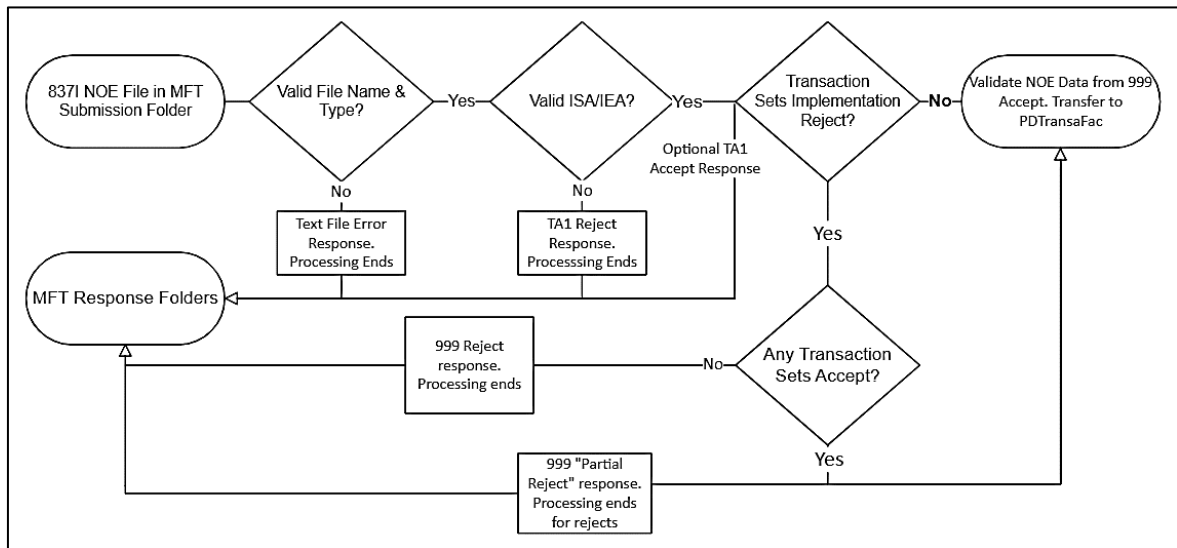
Loop 2300 Segment Data Element.	Element Name	Expected Value	Note
DTP02	Date Time Period Format Qualifier	DT	
DTP03	From and through Date	CCYYMMDDHHMM	<p>Effective date for period being cancelled.</p> <p>When there has been a transfer or change of ownership, the From date on the 8xD must match the corresponding transfer or change date to ensure those dates are removed correctly.</p>

# 4 Submission Processing

## 4.1 Summary

- 1 Submitter places 837I NOE interchange into the RelayHealth (RHPS) External Managed File Transfer (MFT) system submission folder
- 2 RHPS MFT service identifies submission from NOE senders in the NOE submission folder
- 3 RHPS validates file naming and file type
  - 3.1 A text-based error response is delivered to the MFT folder "Error\_Files" for files of unrecognized name, type or format and processing ends
- 4 RHPS validates valid file type for the interchange ISA/IEA control segment and sends TA1 Interchange Acknowledgement to the MFT folder "RHPSResponse"
  - 4.1 TA1 accept according to ISA14 Acknowledgment Requested
  - 4.2 TA1 reject for invalid ISA syntax or data values and processing stops
- 5 RHPS validates accepted interchange for TR3 implementation and send 999 Response for each transaction set within the 837I to the MFT folder "RHPSResponse"
  - 5.1 999 Transaction Set Reject ends processing for transactions in the rejected set
- 6 Accepted production transaction data is transferred to the Medicare Part D Transaction Facilitator

**Figure 4 Flow diagram of the processing summary**



## 4.2 NOE Submission and Response Processing

**Test NOE:** Format the 837I interchange as a test file with Interchange Usage Indicator ISA15 = T

Submit the file to the Test Directory test/NOETEST

**Production NOE:** Format the 837I interchange as a production file with Interchange Usage Indicator ISA15 = P

Submit the NOE to the Production Directory prod/NOEPROD

### 4.2.1 Submitting Interchanges

Using your preferred system MFT file transfer protocols, submit interchanges to the RelayHealth External Managed File Transfer (MFT) system submission folder with the appropriate file name.

The RHPS MFT retrieves new submissions and begins file validations.

### 4.2.2 File Validations

#### 4.2.2.1 File Type Validation

- 1 The RelayHealth MFT service validates that the file type is correct.
  - The file name is in the correct format
  - The file content is an X12 interchange
- 2 Files that pass the validation are moved to the interchange acknowledgment

##### 4.2.2.1.1 Validation Fails

- There is no further processing of submission. It will need to be corrected and resubmitted.
- The MFT service will report the file type error in a txt file that is placed into the “**Error\_Files**” folder

-and-

- An email is generated with the Subject: Error Report (*File Name*)
  - Email Body: This email contains an attached report of errors for the file noted in the subject
  - The text-based error report is attached

### 4.2.2.2 Interchange Acknowledgment

The RHPS service validates the interchange control segments ISA/IEA and returns the TA1 ACK in the MFT response folder. This is the industry standard interchange validation acknowledgment response.

The TA1 ACK – Technical acknowledgment reports the status of the processing of an interchange header and trailer.

A TA1 Accepted is returned when the 837I interchange Acknowledgment Requested ISA14 = 1, Interchange Acknowledgment Requested.

#### 4.2.2.2.1 Interchange Rejected

- TA1 ACK with a reject code is sent
- There is no further processing of the interchange. It will need to be corrected and resubmitted.

#### Note:

- **Test interchanges received in the production folder will fail the interchange validation**
- **Production interchanges received in the test folder will fail the interchange validation**

#### 4.2.2.3 Implementation Validation

The service validates that the 837I syntax is compliant with the 005010X223a2 TR3 implementation guide and returns the 999 Implementation Acknowledgment in the MFT response folder. This is the industry standard X12 TR3 implementation validation.

- The implementation validation is by transaction sets (ST – SE) within an interchange functional group (GS-GE)
- When syntactical errors of any of the transactions in a transaction set are found, the transaction set and all transactions within it are rejected
- If all transactions meet the TR3 implementation standard, the transaction set, and all transactions within it are accepted
- The 999 Functional Group acknowledgment code in AK901 indicates whether transaction sets were rejected

##### 4.2.2.3.1 All transaction Set Rejected

- When all transaction sets are rejected the acknowledge code in AK901 = R.
- All transaction sets within the functional group, and all transactions are rejected
- There is no further processing of the transaction data within rejected transaction sets. It will need to be corrected and resubmitted.

#### 4.2.2.3.2 Partial Rejection

- When at least 1 or more transaction sets within a functional group are rejected **and** 1 or more are accepted the acknowledge code in AK901 = P.
- Transaction sets that are accepted have transaction data transferred to PDTransFac
- There is no further processing of the transaction data within a rejected transaction set that is reported in the 999. It will need to be corrected and resubmitted.

#### 4.2.3 Submission Processing Ends

- Test NOE submission processing ends after the file validation processing.
- Accepted production NOE transaction data is transferred to The Medicare Part D Transaction Facilitator (PDTransFac) service

#### 4.2.4 Transfer to PDTransFac

- 1 Accepted production transaction data is validated for required NOE values and forwarded to Medicare Part D Transaction Facilitator
- 2 NOE processing status is reported to the hospice provider



## 5 Trouble Shooting and Support

To email for support please include:

Organization Name

Contact name

Contact phone

Any alternate email address

Error or Issue summary

**Note: Do not include PHI including screenshots or other images including file data in any email correspondence.**

### 5.1 General Inquiries and Troubleshooting

For assistance or inquiries about Implementation and Setup, submission files, response files or reporting, email: **hospicesupport@relayhealth.com**

An automatic response will be generated that includes information about your case.

### 5.2 RelayHealth External Managed File Transfer (MFT) System

After implementations, connectivity verification and successful file transfers, in the unlikely event you have an issue connecting or submitting or receiving responses using the RelayHealth External Managed File Transfer (MFT) System, email:

ManagedFileTransfer@McKesson.com

## 6 Appendix

### 6.1 Glossary

Term	Description
837I	837 Health Care Claim: Institutional interchange.
999	EDI X12 999 implementation acknowledgment reports standard implementation syntax errors.
CMS	Centers for Medicare & Medicaid Services.
MAC	Medicare Administrative Contractor.
MediFacD	RHPS Medicare Part D Transaction Facilitator website at: <a href="https://medifacd.mckesson.com/">https://medifacd.mckesson.com/</a> The website contains information related to Transaction Facilitation services performed under the CMS Part D Contract.
MFT	Managed File Transfer. Also used to refer to the RelayHealth External Managed File Transfer system.
NOC	Notice of Change for Patient Facility Transfer. Change of Provider/Transfer Notice
NOE	Notice of Election of Hospice. Unless otherwise noted NOE is used to refer to any hospice election event (transaction) type. Formally the NOE is the notice to elect hospice benefits.
NOTR	Notice of Termination/Revocation. NOTR is used when the hospice beneficiary is discharged alive from the hospice or revokes the election of hospice services.
PDTransFac	Medicare Part D Transaction Facilitator processing systems.
RHPS	RelayHealth Pharmacy Solutions.
TA1 (ACK)	The X12 TA1 Interchange Technical Acknowledgment reports the status of the processing of an interchange header and trailer ISA/IEA.
TR3	ASC X12 <b>Technical Report Type 3</b> . X12 Implementation Guide.